

REGISTRATION

Health Ministry & Parish Nursing Course

Registration Deadline:

April 6, 2010

Name _____

Address _____

Phone _____

E-mail _____

Church _____

Church Location _____

Denomination _____

I am a licensed RN. Y__ N__

I am a parish nurse. Y__ N__

Total cost \$350 with \$200 due upon registration.

*Please make check payable to:
Diakon Family Life Services*

Mail check, along with registration form, to:

Diakon Family Life Services
Attn: Deborah White
435 W. 4th Street
Williamsport, PA 17701

**For more information or questions, call
Debbie Best at (570) 320-0520, or email
bestd@diakon.org.**

Diakon Lutheran Social Ministries does not discriminate in admissions, the provision of services, or referrals of clients on the basis of race, color, religious creed, disability, marital status, ancestry, national origin, sexual orientation, age, or sex.

Many Hands. One Heart.

Diakon's Mission
*In response to God's love in Jesus Christ,
Diakon Lutheran Social Ministries will
demonstrate God's command to love
the neighbor through acts of service.*

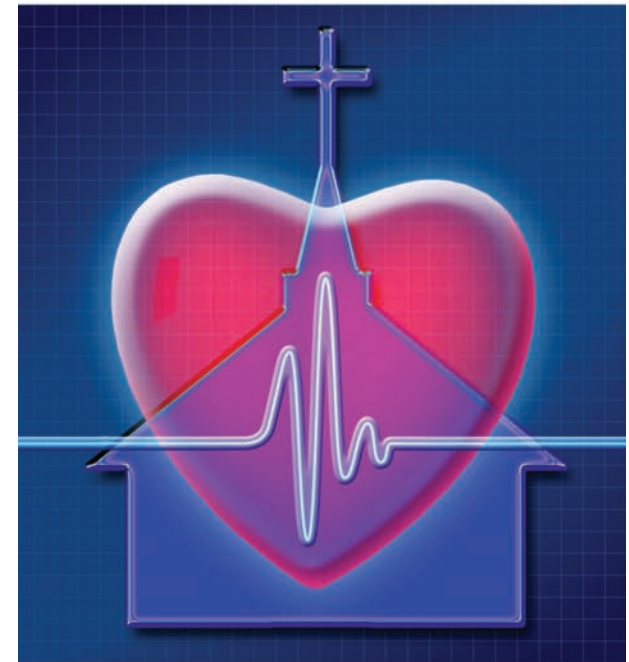


DIAKON FAMILY LIFE SERVICES
A LUTHERAN FAMILY & COMMUNITY MINISTRY

435 W. 4th Street
Williamsport, PA 17701

Faith Community /Parish Nurse Training

in Seven Sessions



**Beginning
April 17, 2010
9:00 a.m. – 4:30 p.m.**

Open to all Demonimations!



DIAKON FAMILY LIFE SERVICES
A LUTHERAN FAMILY & COMMUNITY MINISTRY

This course is intended to train nurses to design and implement a parish nurse / health ministry program

Upon completion of this course, the participant will be able to:

- ▶ Apply basic health ministry/parish nurse knowledge and skills to begin a health ministry in a faith community.
- ▶ Integrate a practical understanding of theology into the health ministry/parish nurse role.
- ▶ Describe how a congregational health ministry fits into the health care of a community.
- ▶ Initiate the dimensions of a parish nurse role.
- ▶ Identify interventions for spiritual care giving.
- ▶ Explain the legal and ethical issues of congregational health ministry.

Course Cost: \$350 – with \$200 due at the time of registration

Upon completion of 49.6 hours, the student will receive a certificate during a Service of Affirmation. All sessions must be completed to receive the Contact Hours certificate.

LOCATION:

This course will be held at the Upper Susquehanna Synod office, Lewisburg, PA. Directions will be mailed upon receipt of registration form.

Sessions:

April 17, May 8, June 5, September 18, October 9, November 6, and December 4 of 2010

Time:

9 a.m. – 4:30 p.m.

In order to keep costs at a minimum, we are asking that you bring a lunch, or plan to order from take-out menu.

In addition, we ask that you purchase the following: 3” three ring binder, and the book *Health, Healing & Wholeness*, by Mary Chase-Ziolek (The Pilgrim Press) – available at www.amazon.com.

You will also be asked to purchase the book *Faith Community Nursing; Scope & Standards of Practice* after the first class.

Incorporating curriculum developed by the International Parish Nurse Resource Center

CORE FACULTY

Debbie Best, RN, BSW, MS
Program Coordinator
Training & Consultation,
Family Life Services
Upper Susquehanna

Rev. Theodore Cockley
Chaplain, Buffalo Valley Lutheran Village
Diakon Lutheran Social Ministries
Lewisburg, PA

Barbara Graybill, J.D.
Attorney at Law
Mexico, PA

Ruth Stoll, DNSc, RN
Coordinator, Congregational Health Ministries
Samaritan Counseling Center
Lancaster, PA

This course is provided by Ephrata Community Hospital Department of Staff Development CME, and has been approved for 49.6 contact hours.

Ephrata Community Hospital is an approved provider of continuing nursing education by the PA State Nurses Association, an accredited approver by the American Nurses Credentialing Center's Commission on Accreditation.